



**FARM TRAK**  
AGRI WORKBOOTS

THE FARMER'S CHOICE

Upper: Polyurethane (PU)  
Outsole: Polyurethane (PU) and  
Thermoplastic Polyurethane (TPU)

Both FTread LB1 & FTread SB1 comply with:  
**EN ISO 20347:2012**  
Personal protective equipment -  
Occupational Footwear

Only FTread SB1 complies with:  
**EN ISO 20345:2011**  
Personal safety equipment -  
Safety Footwear

**Classification I**  
S5 Penetration resistance and cleated sole

The FarmTrak FTread boot range is designed to be used by the professional farmer, and to withstand the harsh agricultural demands of a modern farm.

**Ireland Enquiries**  
Tel: +353 47 71860  
Email: info@agrihealth.ie  
Cloness Road, Monaghan Co. Monaghan, HB W157  
Ireland

**UK Enquiries**  
Tel: +44 28 3831 4070  
Email: info@agrihealth.ie  
9 Silverwood Industrial Area  
Silverwood Road, Lurgan,  
Armagh, BT66 6LN, UK

**FARM TRAK**  
FarmTrakBoots.com

Designed for the seasoned farmer

**NON-SAFETY OPTION**

**FTREAD LB1**  
Polyurethane Light Boot

**FULL SAFETY OPTION**

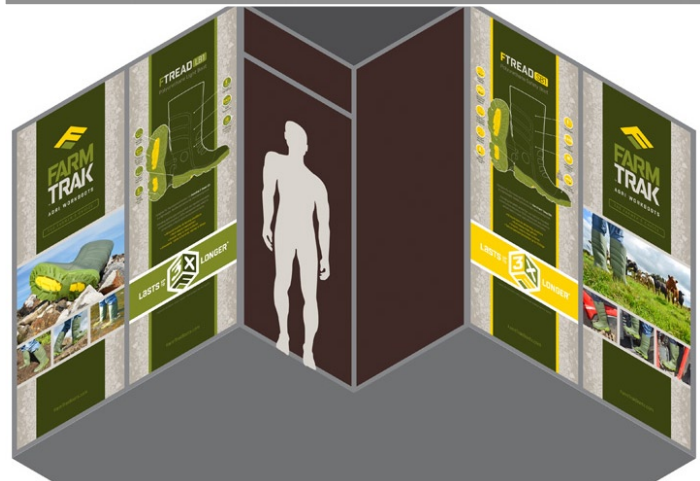
**FTREAD SB1**  
Polyurethane safety boot

Our range of FTread LB1/SB1 polyurethane boots is designed for everyday use by the professional farmer, and to withstand the harsh agricultural demands of a modern farm. Providing optimal grip and comfort, our 'all-in-one' injection-moulded construction ensures a 100% waterproof seal, which is proven and reliable in severe wet weather conditions.

- All round boot for all farming conditions
- All-weather - cooler in summer, warmer in winter
- Lightweight - up to 0.5kg lighter than typical moulded PVC boots
- Flexible and hand-wearing
- Easy to clean, smooth surfaces

FEATURES	FTREAD LB1	FTREAD SB1
Available in 10 Colours	✓	✓
100% Waterproof	✓	✓
Lightweight	✓	✓
Non-Slip	✓	✓
Easy to Clean	✓	✓
Hand-Wearing	✓	✓
Anti-Static	✓	✓
Easy to Store	✓	✓
Easy to Put On/Off	✓	✓
Easy to Repair	✓	✓
Easy to Wash	✓	✓
Easy to Dry	✓	✓
Easy to Store	✓	✓
Easy to Put On/Off	✓	✓
Easy to Repair	✓	✓
Easy to Wash	✓	✓
Easy to Dry	✓	✓
Easy to Store	✓	✓

**LASTS 3X LONGER**



**FARM TRAK**

Home Our Boots Contact Us English

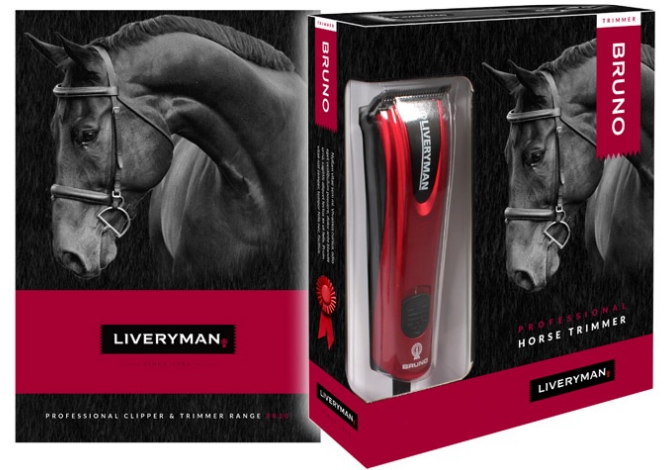
**FARM TRAK**  
AGRI WORKBOOTS

FarmTrak™ is a specialist range of products dedicated to the professional farmer and designed to suit all modern farming conditions.

By drawing on over 30 years of experience supplying footwear and protective equipment to farmers in Ireland and the UK, FarmTrak is entirely focussed on the needs and safety requirements of the modern farmer.



**SECONDARY APPLICATION**  
 The secondary version of the Liveryman logo does not include the rosette motif. This can be used when a single colour version is required for laser engraving onto the blades etc., or it is necessary to show the brand at a smaller size where the rosette would drop out or be unrecognisable. It is not recommended that the rosette motif be used in isolation outside the primary logo brand application.



It is suggested that the product range all feature the same red colour to continue the brand style consistently. [Products shown to scale]  
 Application of brand logo on each product to be as simple and stylish as possible in line with the current product design.  
 Model name to feature as a small reference on the underside of the product range, so not to clutter the overall product design.



The Black Beauty is our most powerful clipper yet. Developed in the UK, it has been designed to cut through the heaviest of winter coats with ease, and can run for extended periods without over-heating.

**RELEASE**  
 Breaks motor technology makes the Black Beauty more reliable, more efficient and more powerful than traditional clippers. Less moving parts means less wear and tear, reduced vibration, lower noise levels and increased reliability.

**LIGHTWEIGHT**  
 Even though the Black Beauty is our largest clipper, we have worked hard to make the design lighter and slimmer than many traditional clippers. This makes it easier to handle and manoeuvre over the horse, reducing user fatigue when clipping.

**VARIABLE SPEED CONTROL**  
 The variable speed switch allows the speed of the blades to be adjusted between 1500-2700rpm. Slowing the speed further reduces the noise level and vibration of the clipper. This is ideal for nervous horses, clippers for the first time, nervous horses, or clipping sensitive areas, such as the head and legs.

**CLIP ANYWHERE**  
 The Black Beauty can be operated either as a corded clipper, or cordless with the addition of the optional external battery pack. This provides up to 4 hours of clipping time with no loss of power, and the flexibility to work without cables trailing on the floor. Useful when clipping a restioke or nervous horse.

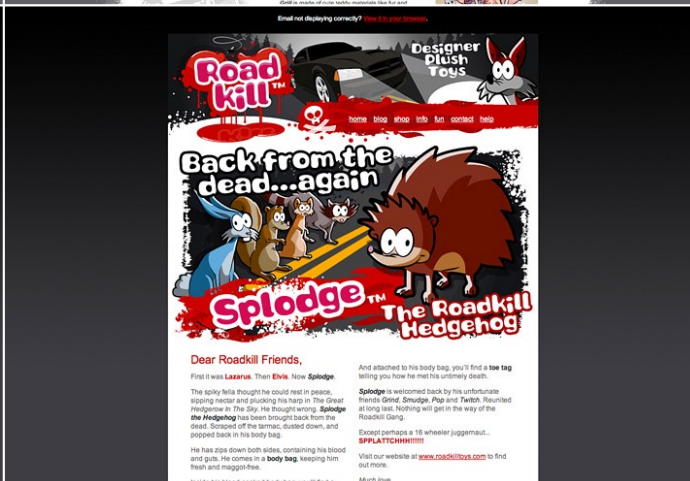
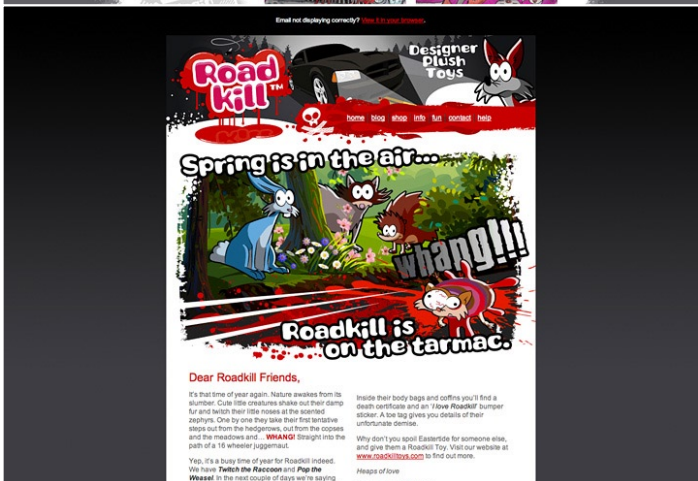
**TECHNICAL SPECIFICATIONS**

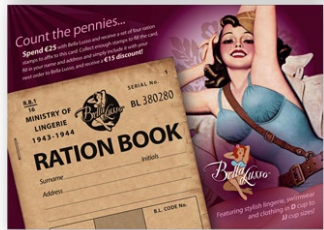
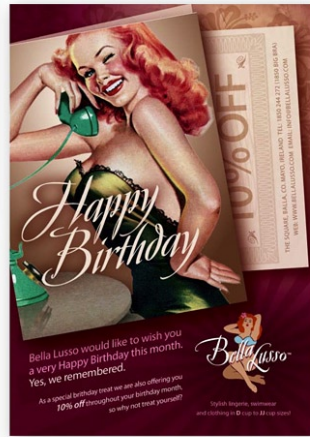
Voltage	230V DC	Speed	1500 & 2700rpm
Run Time	4 hrs*	Charging Time	4 hrs*
Makes Power	Yes	Motor Type	Brushless
Battery	NiMH	Motor Life	10,000 hrs
Blade	Fine	Additional Blades	840 VET, 820, 825, 83, 87, 89, 90, 91, 92, 93, 94, 95, 96, 97, 98, 99, 100, 101, 102, 103, 104, 105, 106, 107, 108, 109, 110, 111, 112, 113, 114, 115, 116, 117, 118, 119, 120, 121, 122, 123, 124, 125, 126, 127, 128, 129, 130, 131, 132, 133, 134, 135, 136, 137, 138, 139, 140, 141, 142, 143, 144, 145, 146, 147, 148, 149, 150, 151, 152, 153, 154, 155, 156, 157, 158, 159, 160, 161, 162, 163, 164, 165, 166, 167, 168, 169, 170, 171, 172, 173, 174, 175, 176, 177, 178, 179, 180, 181, 182, 183, 184, 185, 186, 187, 188, 189, 190, 191, 192, 193, 194, 195, 196, 197, 198, 199, 200, 201, 202, 203, 204, 205, 206, 207, 208, 209, 210, 211, 212, 213, 214, 215, 216, 217, 218, 219, 220, 221, 222, 223, 224, 225, 226, 227, 228, 229, 230, 231, 232, 233, 234, 235, 236, 237, 238, 239, 240, 241, 242, 243, 244, 245, 246, 247, 248, 249, 250, 251, 252, 253, 254, 255, 256, 257, 258, 259, 260, 261, 262, 263, 264, 265, 266, 267, 268, 269, 270, 271, 272, 273, 274, 275, 276, 277, 278, 279, 280, 281, 282, 283, 284, 285, 286, 287, 288, 289, 290, 291, 292, 293, 294, 295, 296, 297, 298, 299, 300, 301, 302, 303, 304, 305, 306, 307, 308, 309, 310, 311, 312, 313, 314, 315, 316, 317, 318, 319, 320, 321, 322, 323, 324, 325, 326, 327, 328, 329, 330, 331, 332, 333, 334, 335, 336, 337, 338, 339, 340, 341, 342, 343, 344, 345, 346, 347, 348, 349, 350, 351, 352, 353, 354, 355, 356, 357, 358, 359, 360, 361, 362, 363, 364, 365, 366, 367, 368, 369, 370, 371, 372, 373, 374, 375, 376, 377, 378, 379, 380, 381, 382, 383, 384, 385, 386, 387, 388, 389, 390, 391, 392, 393, 394, 395, 396, 397, 398, 399, 400, 401, 402, 403, 404, 405, 406, 407, 408, 409, 410, 411, 412, 413, 414, 415, 416, 417, 418, 419, 420, 421, 422, 423, 424, 425, 426, 427, 428, 429, 430, 431, 432, 433, 434, 435, 436, 437, 438, 439, 440, 441, 442, 443, 444, 445, 446, 447, 448, 449, 450, 451, 452, 453, 454, 455, 456, 457, 458, 459, 460, 461, 462, 463, 464, 465, 466, 467, 468, 469, 470, 471, 472, 473, 474, 475, 476, 477, 478, 479, 480, 481, 482, 483, 484, 485, 486, 487, 488, 489, 490, 491, 492, 493, 494, 495, 496, 497, 498, 499, 500, 501, 502, 503, 504, 505, 506, 507, 508, 509, 510, 511, 512, 513, 514, 515, 516, 517, 518, 519, 520, 521, 522, 523, 524, 525, 526, 527, 528, 529, 530, 531, 532, 533, 534, 535, 536, 537, 538, 539, 540, 541, 542, 543, 544, 545, 546, 547, 548, 549, 550, 551, 552, 553, 554, 555, 556, 557, 558, 559, 560, 561, 562, 563, 564, 565, 566, 567, 568, 569, 570, 571, 572, 573, 574, 575, 576, 577, 578, 579, 580, 581, 582, 583, 584, 585, 586, 587, 588, 589, 590, 591, 592, 593, 594, 595, 596, 597, 598, 599, 600, 601, 602, 603, 604, 605, 606, 607, 608, 609, 610, 611, 612, 613, 614, 615, 616, 617, 618, 619, 620, 621, 622, 623, 624, 625, 626, 627, 628, 629, 630, 631, 632, 633, 634, 635, 636, 637, 638, 639, 640, 641, 642, 643, 644, 645, 646, 647, 648, 649, 650, 651, 652, 653, 654, 655, 656, 657, 658, 659, 660, 661, 662, 663, 664, 665, 666, 667, 668, 669, 670, 671, 672, 673, 674, 675, 676, 677, 678, 679, 680, 681, 682, 683, 684, 685, 686, 687, 688, 689, 690, 691, 692, 693, 694, 695, 696, 697, 698, 699, 700, 701, 702, 703, 704, 705, 706, 707, 708, 709, 710, 711, 712, 713, 714, 715, 716, 717, 718, 719, 720, 721, 722, 723, 724, 725, 726, 727, 728, 729, 730, 731, 732, 733, 734, 735, 736, 737, 738, 739, 740, 741, 742, 743, 744, 745, 746, 747, 748, 749, 750, 751, 752, 753, 754, 755, 756, 757, 758, 759, 760, 761, 762, 763, 764, 765, 766, 767, 768, 769, 770, 771, 772, 773, 774, 775, 776, 777, 778, 779, 780, 781, 782, 783, 784, 785, 786, 787, 788, 789, 790, 791, 792, 793, 794, 795, 796, 797, 798, 799, 800, 801, 802, 803, 804, 805, 806, 807, 808, 809, 810, 811, 812, 813, 814, 815, 816, 817, 818, 819, 820, 821, 822, 823, 824, 825, 826, 827, 828, 829, 830, 831, 832, 833, 834, 835, 836, 837, 838, 839, 840, 841, 842, 843, 844, 845, 846, 847, 848, 849, 850, 851, 852, 853, 854, 855, 856, 857, 858, 859, 860, 861, 862, 863, 864, 865, 866, 867, 868, 869, 870, 871, 872, 873, 874, 875, 876, 877, 878, 879, 880, 881, 882, 883, 884, 885, 886, 887, 888, 889, 890, 891, 892, 893, 894, 895, 896, 897, 898, 899, 900, 901, 902, 903, 904, 905, 906, 907, 908, 909, 910, 911, 912, 913, 914, 915, 916, 917, 918, 919, 920, 921, 922, 923, 924, 925, 926, 927, 928, 929, 930, 931, 932, 933, 934, 935, 936, 937, 938, 939, 940, 941, 942, 943, 944, 945, 946, 947, 948, 949, 950, 951, 952, 953, 954, 955, 956, 957, 958, 959, 960, 961, 962, 963, 964, 965, 966, 967, 968, 969, 970, 971, 972, 973, 974, 975, 976, 977, 978, 979, 980, 981, 982, 983, 984, 985, 986, 987, 988, 989, 990, 991, 992, 993, 994, 995, 996, 997, 998, 999, 1000

\*Black Beauty with external battery pack.

**LIVERYMAN UK**  
 9 Silverwood Industrial Area, Silverwood Road, Lurgan, Craigavon BT66 6LN, United Kingdom











# Nurse Station



Search Cart (0)

Home Womens Tunic Mens Tunics Scrub Tops Lab Coats Beauty & Spa Tunics Diagnostics

 **Free Delivery** on orders over €50

Best Sellers



Ireland's specialist store for all your nursing essentials

**Nurse Station**

www.NurseStation.ie Low Call: 1890 290 390

Tunics & Uniforms | Fob Watches | Diagnostic Equipment

**10% Off**

Claim your online discount by entering the following code when purchasing your products at the checkout.

PROMO CODE: **NURSE2015**

\*Available for a limited time only. Offer expires 31 December 2015.

**Women's & Men's Tunics**  
Stethoscopes | Fob Watches | Pen Torches  
Blood Pressure Monitors

VISIT A LOCAL RETAIL OUTLET NEAR YOU

Our helpful and friendly staff can offer extensive product knowledge, advice and support on clothing and nursing equipment to meet your particular requirements.

<b>Ballyhaunis Showroom</b> Knock Road, Toorane, Ballyhaunis, County Mayo. Tel: 094 9633808	<b>Cavan Shop</b> Cooleshill Road, Drumakee, Cavan. Tel: 049 4353001	<b>Dundalk Shop</b> Williamsons Mall, Dundalk, County Louth. Tel: 042 9325000
<b>Castlebar Shop</b> Old Westport Road, Castlebar, County Mayo. Tel: 094 9044464	<b>Cork Shop</b> South Cork Industrial Estate, Vicar's Road, Cork. Tel: 021 4323024	<b>Galway Shop</b> Terryland Retail Park, Hawthorn Road, Galway. Tel: 091 567812

Retail outlets are open Monday to Saturday, 9:30am to 5:30pm. Telephone orders welcome.  
www.NurseStation.ie

Ireland's specialist centre for all your nursing essentials

**Nurse Station**

www.NurseStation.ie  
Low Call: 1890 290 390

Women's & Men's Tunics  
Stethoscopes | Fob Watches  
Pen Torches | Blood Pressure Monitors

Shop online | Shop by phone | Shop in-store

Ireland's specialist store for all your nursing essentials

**Nurse Station**

www.NurseStation.ie Low Call: 1890 290 390

Women's & Men's Tunics | Stethoscopes  
Fob Watches | Pen Torches | Blood Pressure Monitors

**10% Off**

Claim your online discount by entering the following code when purchasing your products at the checkout.

PROMO CODE: **NURSE2015**

\*Available for a limited time only. Offer expires 31 December 2015.







